



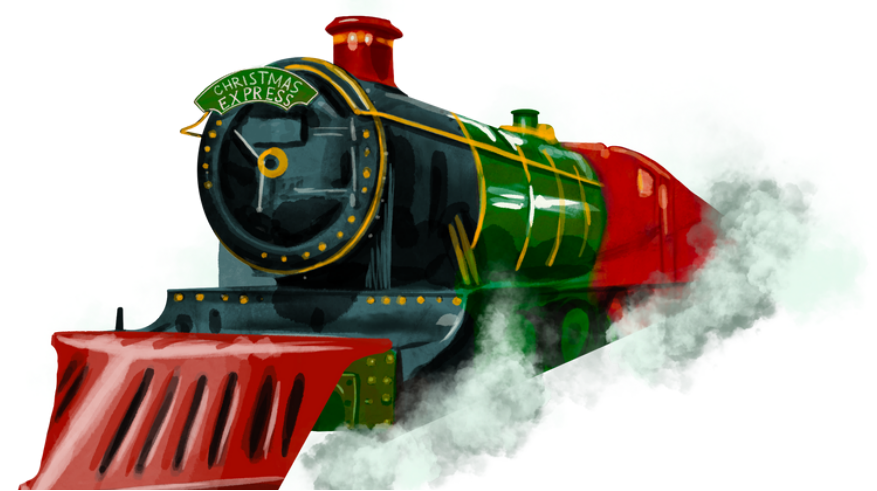
# YEAR R/1/2 ROWAN CLASS

Spring 1

## Curriculum Newsletter

This half term our curriculum scheme is: **The first railways.**

Our enquiry question is: **How has the invention of the steam train impacted Britain?**



### ENGLISH - WRITING

In English the children will be writing a diary entry as a passenger of the first railway train. They will then be making a fact file based on animals which links to our science topic for the term.



### ENGLISH - READING

The children will continue to make great progress with their RWI phonics and reading programme.

Some of our children have progressed to our reading comprehension group, learning to read longer texts and answer detailed questions.



### MATHEMATICS

Working within their year group level, the children will be working upon units involving addition, subtraction, shape, multiplication and division.



### HISTORY

In History we will be learning about the impact of the railways on Britain. The children will discover what life was like before and after the railways.

The children will use varying sources, including pieces of art, maps and timelines to help them answer our enquiry question.



### Science

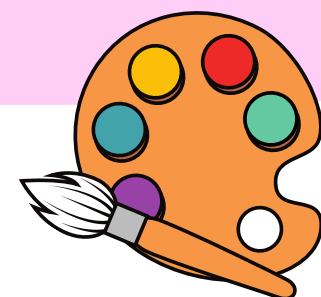
We will be learning about Living things, habitats and the food chain. Children will be exploring outside areas as well as learning in the classroom. At the end of the unit the children will assess the impact of human behaviour on habitats.



### Art

In Art the children will be increasing their knowledge of other artists and developing their opinions of art by learning about Japanese artist Kazuhito Takadoi.

Their art will be influenced by nature as well as including natural items. The skill they are learning this half term is weaving.



### COMPUTING

This term the children will be looking at moving robots. The children will be investigating early programming concepts which will include buttons, directions and routes.

The children will be using floor robots throughout this topic.



### RE

In RE the children will be looking at how Christians belong to their faith family. They will learn about baptism and first communion and how this shows belonging in the Christian faith.

They will also look at the different artefacts and symbols that belong within a church and what they are used for and what they signify.



### Music

The children will continue to develop their love and knowledge for different genres of music.

They will also be experimenting with instruments and working on their improvisation, rhythm and performance abilities.



### PSHE

In PSHE the children will be looking at dreams and goals. The children will be looking at goals they would like to achieve and the steps they need to take in order to achieve this. They will also be looking at how this makes them feel.

